

# MIGRATION STORIES Northbridge Walking Trail



## MIGRATION STORIES Northbridge Walking Trail

## MIGRATION STORIES Northbridge Walking Trail

The **State Library of Western Australia** hopes you enjoy this walk exploring the city of Perth's migrant heritage. It begins and ends at the State Library of Western Australia in the Perth Cultural Centre. Allow an hour to comfortably complete this walk with a school group.

This trail is an introduction to migration history and stories.

The State Library collects and preserves maps, photographs and other items to record the history of Western Australia. It also provides free online resources and workshops for school students to develop historical investigation skills [slwa.wa.gov.au](http://slwa.wa.gov.au)

To book a workshop, speak to an education officer on **(08) 9427 3202**, complete the online form or email your request to [ed@slwa.wa.gov.au](mailto:ed@slwa.wa.gov.au)

Links to additional resources can be found through the State Library catalogue and website.

**1** Start at State Library Francis Street entrance. The Perth railway station and bus stations are close to the Library. *\* PUBLIC TOILETS*

3 minutes

Western Australia is rich with stories of people who have migrated here. The State Library shares these stories and records the impact of migration.

[slwa.wa.gov.au/our-services/teachers](http://slwa.wa.gov.au/our-services/teachers)



**2** Walk through to the Perth Cultural Centre, head west towards William Street. Stop on the corner of William and James streets.

5 minutes

The history of Northbridge has been formed by more waves of migration than any other area of Western Australia; this rich, ethnic diversity has shaped its character.



THE BRASS MONKEY

**3** 196 William Street.

10 minutes

Agenzia Merizzi, travel and land agent, once located at 196 William Street.

Giuseppe Gianfranco Merizzi (1927–2007) migrated from Tirano Sondrio in the late 1940s. After working in the bush, he became a migration agent. He was involved in the migration of many Italians to Western Australia.

[slwa.info/merizzi-advertising](http://slwa.info/merizzi-advertising)



BA1626/12

**4** Walk south along William Street past the State Theatre Centre to the corner of Roe and William streets.

12 minutes

From here you can see the State Theatre Centre and the Horseshoe Bridge which takes traffic over the railway line. 'Northbridge' was not known as Northbridge until the 1970s. The railway transported people and goods to and from mining and agricultural areas.



013607D

Why do you think people newly arrived settled by the railway?

[slwa.info/hasschats-transport](http://slwa.info/hasschats-transport)

**5** Cross Roe Street at the lights and walk west. You'll find the Northbridge Chinese Restaurant.

15 minutes

Moon Chow, a carpenter, is considered the first Chinese person to settle in Western Australia in 1829. Chinese people migrating to Perth came as labourers and farm hands and ran businesses such as market gardens, laundries, bakeries, furniture factories, tailor shops and grocery stores. In 1886, Western Australia introduced an Act to regulate and restrict the immigration of Chinese people.

[slwa.info/teacher-resources](http://slwa.info/teacher-resources)  
[slwa.info/2011-census](http://slwa.info/2011-census)



BA1483

**6** Keep walking west until you see the Chinese gates. Go through the gates, Chung Wah Lane and through the Old Shangai food court to James Street.

20 minutes

The Chung Wah Association, 128 James Street, was formed in 1909 to advocate for the Chinese community. Migration from China to Western Australia remained small-scale until the dismantling of the White Australia Policy. Between 1971 and 1980, 275 people migrated from China.

[slwa.info/hasschats-chinese-migration](http://slwa.info/hasschats-chinese-migration)  
[slwa.info/chungwah-history](http://slwa.info/chungwah-history)  
[slwa.info/chungwah-article](http://slwa.info/chungwah-article)



CHINESE GATES

**7** Travel west to the corner of James and Lake streets.

25 minutes

There are many businesses in the area that are clues to Western Australia's migration history. Can you spot signs for Torre Butchers, An Sibin, Midori Teppanyaki and Pocha Pocha? What heritage do they connect with? Some butchers came from post-war Italy where meat was scarce and expensive.



AN SIBIN



[torre.com.au/pages/about-us](http://torre.com.au/pages/about-us)

THE NORTHBRIDGE PIAZZA PROVIDES A SMALL SHADED REST AREA

**8** Continue along James Street to Russell Square. Walk through the entrance and up Moon Chow Promenade to the central rotunda.

30 minutes

This square was named for Lord John Russell, the Secretary of State and Colonies, 1839, and later Prime Minister of Great Britain. It became known as *Parco dei Sospire*, 'the park of sighs' referring to the homesick Italian migrants who would meet here.

What do you think they would talk about?

**9** Russell Square Rotunda.

35 minutes

This park was designed by head gardener for the City of Perth, John Braithwaite, in 1899. The rotunda and the sculptures by artists Greg James and Drago Dadich were added in the 1990s. The art refers to Aboriginal, European and Asian influences, the environment and today's lifestyle.

What cultural links can you find in the art work?



Russell Square, Perth.

004046d

**10** Walk along Megisti Promenade to the exit opposite the Greek Orthodox Cathedral.

40 minutes

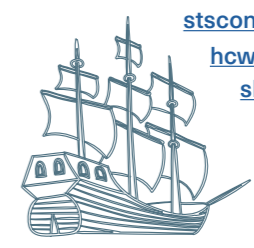
The first Greek people who came to Australia arrived in the 1820s. There have been many waves of Greek migration since then. The largest periods of migration occurred between the 1950s and 1970s.

The Greek Orthodox Church provided familiarity to the Greek migrants. They worked together to raise funds and build what is now the Cathedral of St Constantine and Helene. Northbridge has had centres for many different faiths, including Greek Orthodox, Jewish, Catholic, Muslim and Protestant.



GREEK ORTHODOX CATHEDRAL

Walk east along Francis Street and turn left at



[stsconstantinehelen.org](http://stsconstantinehelen.org)  
[hcwa.org/en/about/history](http://hcwa.org/en/about/history)  
[slwa.info/greek-resources](http://slwa.info/greek-resources)  
[slwa.info/greece-census](http://slwa.info/greece-census)





11

**Lake Street. On the right find The Re Store.**

While meat was plentiful other Italian food staples such as olive oil, coffee, and pasta were scarce. Italians relied on importers like Giovanni Re, founder of The Re Store/ European Foods. The business thrived by supplying migrant clientele with a taste of home.

What tastes from home would you miss?

[youtu.be/no2I5J\\_VmV8](https://youtu.be/no2I5J_VmV8) [slwa.info/italian-resources](https://slwa.info/italian-resources)



THE RE STORE

12

**Turn into Aberdeen Street and walk east.**

Down on the north side of the street you will find the Aberdeen Hotel, one of the oldest hotels in Perth. The original building was first licensed as a hotel in 1886 as the *All Nations Hotel*, indicating a welcome to travellers from all over the world.

[slwa.info/all-nations-hotel](https://slwa.info/all-nations-hotel)



312777PD

13

**Cross William Street and continue east along Aberdeen Street. North Metropolitan TAFE is on the corner.**

Today new Western Australians can access classes at North Metropolitan TAFE, including English tuition. Approximately 170,000 people arrive each year to live in Western Australia, but recently even more people have been leaving. Flows of migration change all the time.



NORTH METROPOLITAN TAFE

[northmetrotafe.wa.edu.au](https://northmetrotafe.wa.edu.au)

55 minutes

50 minutes

45 minutes

14

**Continue along Aberdeen Street, stopping at the corner of Museum Street. Find St John's Lutheran Church.**

The first Lutheran church was established in 1902, and further German immigrants expanded the Perth Lutheran congregation.

What do you think contributed to other waves of German immigration?



BA2899/140

58 minutes

15

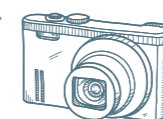
**Turn south into Museum Street.**

Built in 1897, 27 Museum Street is the only surviving historical residential building in the area.

In the late 19th century, there was a rapid expansion of building in Western Australia during the gold boom when many new migrants arrived. Perth Mosque was built on William Street in 1906 with money raised by Afghan cameleers.



27 MUSEUM STREET



60 minutes

16

**At the end of Museum Street find the State Library of Western Australia.**

If you're attending workshops, please notify the Welcome Desk of your arrival.

You can become a member of the State Library, it's free.

Have you joined your local library?



325683PD



State Library of Western Australia  
Perth Cultural Centre  
25 Francis Street, Perth WA 6000

+61 8 9427 3111

[slwa.wa.gov.au](https://slwa.wa.gov.au)



@statelibrarywa