

ESTABLISHED 1848. **PEACOCK & BUCHAN LTD.** ESTABLISHED 1848.

First Class Awards
Sydney and Melbourne
International Exhibitions, 1879-80-81.
GOLD MEDAL, Sydney, 1888.

Contractors to Her Majesty's Government, The India Board,
The Crown Agents for the Colonies, The Board of Trade.

ANTIFOULING COMPOSITIONS
For IRON, STEEL AND SHEATHED VESSELS.

"COPPER PAINT" for Wood Bottoms of Yachts, Fishing Smacks, Boats, &c.
READY-MIXED, SANITARY, NON-POISONOUS PAINTS,
For House and Ship Painting, Internally and Externally.

MANUFACTORY:
SOUTHAMPTON, ENGLAND.

APPLY TO
Messrs. C. P. HARRIS, SOARFE & Co.,
FREMANTLE, W.A.

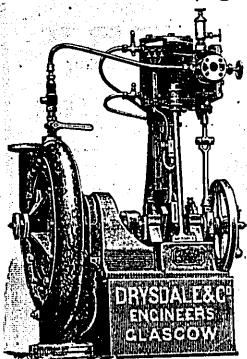
First Award, Sydney, 1879-80.
First Award, Melbourne, 1880-81.
Silver Medal, Adelaide 1887.
Gold Medal, Sydney, 1888.

GLENFIELD & KENNEDY, LIMITED,
KILMARNOCK, SCOTLAND,
Hydraulic and Sanitary Engineers.

Makers of SLUICE VALVES, HYDRANTS, FOUNTAINS, TAPS, WATER METERS,
AND ALL
Waterworks and Fire-Extinguishing Appliances;
ALSO HYDRAULIC AND PUMPING MACHINERY.

DRYSDALE & CO.,
Bon-Accord Engine Works, London Road, GLASGOW.

ESTABLISHED 1868. Cable Address: "BONACCORD, GLASGOW."



CENTRIFUGAL PUMPS & ENGINES,

MADE SINGLE OR DOUBLE,
For DOCKS, CIRCULATING PURPOSES, SALVAGE WORK, SAND PUMPING, &c.
The Cheapest and most efficient Pump in the Market. From Newest and most Improved Patterns.

SPECIALTIES: Centrifugal Pumps, Fan Engines and High-Speed Engines,
Hydraulic Presses and Pumps, Hydraulic Cranes, Accumulators, Hydraulic Riveters, Lifts of all kinds.

FANS & ENGINES
FOR FORCED DRAUGHT IN BOILER FURNACES & FOR VENTILATING.
MADE FOR ANY QUANTITY AND POSITION.

HIGH-SPEED ENGINES.

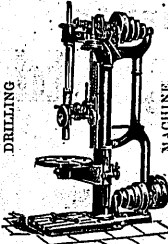
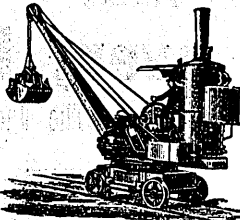
DRIVING DIRECT AT SLOW SPEED.

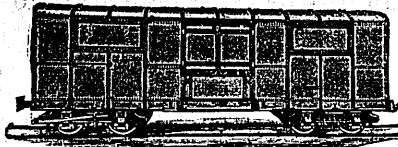
Agents: J. WILDRIDGE & SINCLAIR, Alliance Chambers, 97, Pitt Street, SYDNEY &
A. M. P. Buildings, BRISBANE.

SPECIALITIES.
STEAM ENGINES & BOILERS.
PUMPS & PUMPING ENGINES.
CRANES, Steam or Hand Power, for all purposes.
The "CLUTHA" WINDMILL, the best and cheapest power for grinding feed, churning, pumping water, sawing wood, &c., &c.

ENGINEERS' MACHINE TOOLS.
New Designs with latest improvements.

P. & W. MACLELLAN, LTD.,
CLUTHA WORKS, GLASGOW.

DRILLING MACHINE.  **CONTRACTORS' STEAM CRANE.** 

RAILWAY WAGON BUILDERS.  **IRON AND STEEL BRIDGE BUILDERS.**
BOLT AND NUT MANUFACTURERS. **IRON ROOF MANUFACTURERS.**

Complete Railway Plant Contractors.
Chief Office and Warehouse: 129, Trongate, GLASGOW. Registered Office: 8, GREAT WINCHESTER STREET, E.C., LONDON.
Registered Cable Address: "MACLELLAN, GLASGOW." Registered Cable Address: "MACLELLAN, LONDON."

ORENSTEIN & KOPPEL, Ltd.,
BERLIN. LONDON. CAIRO.
JOHANNESBURG. CALCUTTA.

Manufacturers of every description of
RAILWAY PLANT, ROLLING STOCK AND LOCOMOTIVES.
Portable Railways for MINING and TIMBER PURPOSES A SPECIALITY.

Sole Agents for West Australia:
STRELITZ BROS.,

Fremantle.
Perth.
Coolgardie.
Kalgoorlie.
Menzies.
Cue.
Norseman.

