

Telegraphic Address: "NASMYTH, PATRICROFT."

Nat. Telephone No. 5 (Eccles).

NASMYTH, WILSON & CO., LTD.,

Locomotive, Hydraulic and General Engineers,

BRIDGEWATER FOUNDRY,

London Office:
5, Dowgate Hill, Cannon St., E.C.

PATRICROFT, near MANCHESTER.

LOCOMOTIVES FOR MAIN LINE and other purposes for Great Britain, the Colonies and Abroad.

LOCOMOTIVE BOILERS, TENDERS AND DUPLICATE PARTS.

HYDRAULIC BALING, PACKING AND FINISHING PRESSES for Wool, Cotton, Jute and other Fibre.

Patent Horizontal Direct-Acting Pumping Engines for Baling, Packing, Finishing and other Presses.
Special Multiple-throw Independent Pumps, suitable for being belt- or gear- driven.
Hydraulic Intensifiers and Accumulators, Deep Well and all classes of Pumping Plant.

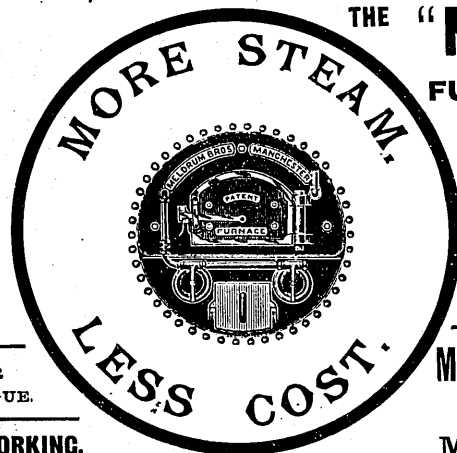
MAKERS AND ORIGINAL INVENTORS OF **STEAM HAMMERS**, of all sizes, from $\frac{1}{2}$ cwt. to 40 Tons. Single or Double Acting, with or without Self-Acting Motion.

Patent Steam Pile Drivers.

BLOWING ENGINES, WINDING ENGINES, AIR COMPRESSORS.

Gold and Silver Medal and 1st Class Certificate of Merit, Calcutta, 1883-4.

FOR
Gold Mines,
Electric
Works,
Gasworks,
Breweries,
Flour Mills,
&c., &c.



THE "MELDRUM"

FURNACE FOR ALL

NEW & OLD BOILERS.

THE QUICKEST AND MOST
ECONOMICAL STEAM RAISER
IN THE WORLD,
ALSO MECHANICAL STOKERS
AND REFUSE DESTRUCTORS.

MELDRUM BROS. LTD.

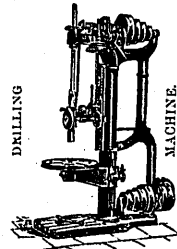
TIMPERLEY,
MANCHESTER.

Please quote this book in all enquiries.

As used by
GREAT BOULDER
MAIN REEF, &c.,
Mines.

WRITE FOR
CATALOGUE.

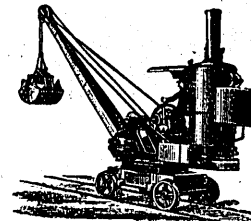
13,000 WORKING.



SPECIALITIES,
STEAM ENGINES & BOILERS,
PUMPS & PUMPING ENGINES,
CRANES, Steam or Hand Power, for all purposes.

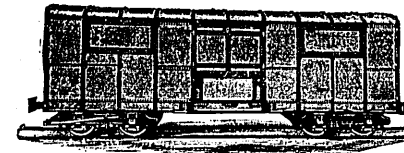
The "CLUTHA" WINDMILL, the best and cheapest power for grinding feed, churning, pumping water, sawing wood, &c., &c.

ENGINEERS' MACHINE TOOLS.
New Designs with latest improvements.



P. & W. MACLELLAN, LTD.,
CLUTHA WORKS, GLASGOW.

**RAILWAY
WAGON BUILDERS,
BOLT AND NUT
MANUFACTURERS.**



**IRON AND STEEL
BRIDGE BUILDERS,
IRON ROOF
MANUFACTURERS.**

Complete Railway Plant Contractors.

Chief Office and Warehouse:
129, Trongate, GLASGOW.

Registered Cable Address: "MACLELLAN, GLASGOW."

Registered Office:
8, GREAT WINCHESTER STREET, E.C., LONDON.

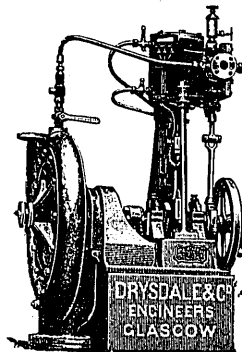
Registered Cable Address: "MACLELLAN, LONDON."

BONACCORD CENTRIFUGAL PUMPS

DRIVEN BY Electricity, Steam, Gas, and Oil Engines, Belt or Rope,

FOR USE IN

GRAVING AND FLOATING DOCKS AND MINES;
ALSO FOR
DRAINING, IRRIGATING, & SALVING PURPOSES.
Fan Engines and High-Speed Engines.



DRYSDALE & CO.,
Bon-Accord Engine Works,
GLASGOW.

TELEGRAMS:
"BONACCORD, GLASGOW."

Agents: J. WILDRIDGE & SINCLAIR, Vickery's Chambers, 82, Pitt Street, SYDNEY, and A. M. P. Buildings, BRISBANE; and SPLATT, WALL & CO., corner of Hay and Pter Streets, PERTH.