

Koeger, W
 Shaddock, W H
 Shepherson, O R, mill hand
 Shepherson, R C E, mill hand
 Smith, F N
 Spjck, G O, teamster
 Sproston, Arth, carpnt
 Stewart, Terl, foreman
 Thomas, H, mill hand
 Vaughan, A, benchman
 Vaughan, E
 Whittington, T, teamster
 Wright, G, mill hand
 Bucklands, see Northam
 Buckland Hill, see Cottlesloe Beach
 Buckley's Tank, see Koorda
 Buidania, see Norseman
 Buladins, see Boolading

BULLA BULLING,

Coogardie G F, 333 m fr Pth; r, Tel. MOO
 Chadwick G, labr
 Dugan C, labr
 Graham A, labr
 Lewis D, labr
 McDonald J, prspctr
 Morris, Annie, Rock htl
 Nichols A, pumper
 Norris W, prspctr
 Ross, Wm, labr
 Wase, Jas, labourer
 Bullading, see Boolading
 Bullagin, see Arthur River

BULLARING, Avon

Co, 215 m S by rail
 Alcock Stan frm
 Anderson & Walker, frmrs
 Anderson, Jas, frm mgr
 Aust, Albt, farmer
 Baker, Geo, farmer
 Baker, Thos W C, landowner
 Bell, Chas, frmr
 Bell, Ernst, frmr
 Bell, Geo E, frmr
 Bell, Thos, frmr
 Bell, Thos L, farmer
 Bouncy C, frmr
 Burrows & Edenborough, fms
 Chipper Arth frmr
 Clark, Fredk, frmr
 Clark, Geo E, frmr
 Cole, Les, frmr
 Cooke Wm farm hand
 Davenport Stan, frmr
 Davies, A L D, frmr
 Davies, E O, frmr
 Duffy Ernst frmr
 Elsegood, Gordon, farmer
 Ferguson Wm, farm hnd
 Hewitt, Frank, frmr
 Hills, Claude R, J.P., frm
 Hotham, Chris, frmr
 Hotham, Hugh, frmr
 Howell Herman V, frmr
 Howell, Mark, frmr
 Howell, Richd H B, frmr
 Jones Wm farm hand
 Langford Bros, farmers
 Langford, Albt (I Bros)
 Langford, Arth (I Bros)
 Lee, Richd, farm hand
 Lloyd Wm, frmr
 Lucas, Wm, frmr
 Marchant T and G, frmrs
 Marney Wm farm hand
 Martin, A C, frmr
 Methevell Wm farm hand
 Mooney, Wm, frmr
 Murphy, Coulson, farmer
 Murphy, J. C, frmr
 Murphy, Wm, frmr
 Noack Herman frmr
 Partridge, C H, ship asst
 Polkinhorne, Abner S, frmr
 Polkinhorne, Hy, ind owner
 Rafferty Jno farm hand
 Sanley, Alex, frm hand
 Selmons, Geo, J.P., frm, and skpr
 Thornton, Jas, frm
 Tipton Harry S, conrt
 Tipton, P, farm hand
 Vale, Jas H, frmr
 Vale, Mrs A, frmr
 Vein Brog, frmrs
 Watts Fredk A, frmr
 Whiteford A B, frmr

Watts, Fredk J, frmr
 Willis, H G, frmr

BULLFINCH, 259 m

N E fr Perth by rail; tel. M O & Sav Bk
 Adeshod Ernst, frmr
 Antognoli G, mlner
 Bacon, J, frmr
 Bamber, Wtr A, frmr
 Barr Allick, mine owner
 Birrey, Fredk, frmr
 Brooker Wm H, mlner
 Bullfinch G.M. Co
 Burns, Jno, bkshp
 Butcher Jas M, stockman
 Carter Jno, mlner
 Cass-Smith W P, frmr
 Chapman H R, mlner
 Clements Jno W, mine ownr
 Contess Edwards, mlner
 Goy, Harry, frmr
 Cox, Harry, frmr
 Cox, Owen, frmr
 Edwards Thos C, frmr
 Empson Syd, frmr
 Garbutt Hy W, frmr
 Garbutt Ernest E, frmr
 Garbutt Wm H, frmr
 Glendinning, J, prspctr
 Goodwin Arth F, eng drvr
 Goodwin Edwd A, mlner
 Green Horace L, mlner
 Hackett B, mlner (Mfmxm)
 Hardwick, Ernst E, frmr
 Hockley Clifton R
 Hockley Herb L, mlner
 Hockley Saml, engr
 Hoffman, Arth, frmr
 Hoffman, O, frmr
 Ickeringill Thos, Htl prr
 Ickeringill W Roy, carrier
 Jukes, Jno, frmr
 Kelly, P J, see Miners' Un
 Kelly Richd A, frmr
 Laselett, Arth E, frmr
 Laselett, H A, Exchange Htl
 Macdonnell Ewen, mlner
 Mann Fredk J, stre & grngtr
 Mann Fred R, frmr
 Morris Jno, prspctr
 Nicolls Geo H, stlr
 O'Neill Phil A, mlner
 Page Jno, mlner
 Parker Jno J, prspctr
 Reynolds, Maurice, frmr
 Roberts Frank A, frmr
 Roberts, Herbert H, frmr
 Seonally, Wm, frmr
 Walker, Chas, frmr
 Smitham Chas, mlner
 Smitham Wm, mlner
 Stanesby, Chas O, frmr
 Whalley Wm R, labr
 Withler Alex, conrt
 Yule, Geo, frmr

BULLOCK HILLS, 216

216 m from Perth, rl to Katanning then hire See also Glencloe
 Bain Jas
 Olancy M
 Forbes Bert J
 James Gilt O
 James Percy D
 Henward Reg T
 Ladyman, Clem
 Ladyman, Gordon
 Ladyman Timothy E
 Leathard Alfd
 McDougall A V, frmr
 McPherson Chas
 Sinker S, frmr
 Bullrush Creek, see Donnybrook

BULLSBROOK, Swan

dist. 27 m fr Perth by rail; tel.
 Beales, Ernest, mgr orchrd
 Bestry, Jno, frmr
 Bestry, Peter, frmr
 Bianchini E, frmr
 Burley, —, frmr
 Burnett, Richd E, frmr
 Bush, Frank, gardener
 Cannell, Jno, crprtr
 Copeman, S, strkpr
 Copeman, Wtr J, p m
 Cunningham, A E, mgr farm
 Davidson Bruce, frmr

Davidson Cyril H, labr
 Edmondson, Wm H, frmr
 Foster Edwd bkamth
 Fowler Alice pltry frm
 Fraser, David, gardener
 Gibb, J, frmr
 Gubbins, Arch, frmr
 Grigg, Wm G, conrt
 Inncend, Gustav A, frmr
 Hancock, Mrs A M, farmer
 Harding, Jos H, grdr
 Harrison, W R, lime burner
 Hart Wm, labr
 Hoard, Chas, farmer
 Hunter, Thos, gdr
 Jacques, Edwd, labr
 Jordan, Alfd, gdr
 Jose, Wm T, crprtr
 King, Albert, farmer
 King, C A, frmr
 King, Lionel G, frtgrwr
 Larkin, J, labr
 McKay, Thos, gdr
 Martin, Arthur T, carrier
 King, C A, frmr
 fruit grower
 McCaffrey, Jno, grdr
 Martin, Stanley, farmer
 Mason Geo, fetlter
 Meyer, Kurt, gardener
 Moore Geo, grdr
 Morley, Chas R, ganger
 Newton, W, Htl Bullsbrook
 Peel, G, frmr
 Plant, Aloysius, fruitgrower
 Pickett, Geo, farmer
 Pickett, Wtr B, farmer
 Quin Geo labourer
 Quin, Mrs Sydney, farmer
 Rae, Richd, farmer
 Read, Jeffrey, gdr
 Robinson Irwin, grdr
 Rogless Bros, frmrs
 Rutland, Jas, gdr
 Sandalbury Bert, fruitgrower
 Simons, France, gardener
 Smith L O, sheep frm
 Stephens Isaac, tchr
 Stevens, J, frmr
 Stoddart, R J, orchardist
 Studson, Edwd, farmer
 Stacey, H R, labr
 Summers, Jas, farmer
 Summers, Jno, farmer
 Taylor, Geo, junr, farmer
 Taylor, Robt S, farmer
 Thomas, W, gardnr
 Tolley, Edwd, frmr
 Waldeck, J A, frmr
 Walker, Chas, frmr
 Walker, Jno, W, grdr
 Walshe, Bert J, frmr
 Warren Alice Jane labourer
 Warren, Edwd, gardener
 Warren, Geo, bkshp
 Warren, Robt, labr
 Warren, Sydney, conrt
 Warren, Wm R, farmer
 Warrington A, grdr
 Watson Mrs L A, pltry frm
 West, Rupt, frmr
 Witney Thos frmr

Bull's Creek, Canning river. x M E fr Fremantle. See also Canning Bridge
BULONG, N.E. Cool-
 gardie G F, 394½ m fr Pth; r, kalg, th 19 m cch
 Backlund, Martin
 Bergin, Jos, prspctr
 Beyers, Thos, prospector
Bulung Mns' Inst
 Carme, Hy, prspctr
 Atkins Geo, Moore st
 Atkins Les W, Rocky Pt tea rms
 Coen Jas, prspctr
 Creodon, Jeroniah, pastoralist
 Daley, J, mlner
 Dodman T, prspctr
 Donnelly E, prspctr
 Evans E, ganger
 Fincher, T, prospector
 Frost —, prspctr
 Gessner Alfd, prspctr
 Gessner Frncs, prspctr
 Harris, Wm, prospector
 Haffa Thos, prspctr
 Johnson, Alf, carpnt
 Jones, E F, frm, Hmptn Hill
 Jones, Robt C, J.P.
 McNickleo, W, mlner

Nye H, Bulong htl
 Leach, Edwin B, prospector
 Rodgers, H, mlner
 Thompson A, prspctr
 Warrell, Robt, mlner
 Williams M, prspctr
 Woodward —, prspctr

BULYEE, 151 m by

rall fr Perth
 Brown, C, frmr
 Brown, L H, frmr
 Brown, R, frmr
 Brown, R O, frmr
 Browne J G, frmr
 Corry F W, frmr
 Corry J H, frmr
 Corry R, frmr
 Corry, S R, frmr
 Cousins, L, frmr
 Forrest B S, frmr
 Grey, C O F, frmr
 Harvey, C A & G S, frmrs
 Harvey, D H, frm, mgr
 Hubbert, J, frm, mgr
 Jenkins, R T, strekpr
 Poultney, Mrs K
 Rigley T, frmr
 Ryan G J, frmr
 Sanderson J W, frm
 Wetman H, frmr
 Woodham Bros, frmrs
 Young, F Y, frmr

BUNBURY, Wellington

dist. Seaport for the Sth West; 115 m S by rl or stmr fr Perth; newsp, "Bunbury Herald," tri-w; "South-Western Herald," wkly, & "Times," tri-w; Banks Cmlwth, Govt, NSW, A'sia, Nat & Union; tel. MO. Pop. 6000.
 Aulton, Emil A, Wittenoom street

Abrahamson H H, cust agt, Vict st; p r, Wittenoom at Abrahamson Miss A M E, Rathmines
 Adams Archd Hy J, Princep at Adams Harry C, div ret off, Buchanan st
 Adamson Arth A, Parkfield st
 Adcock Chas Jas, Carey rd
 Adelaide, SS Co Ltd (W E McKinn, agnt)
 Alexander C, Ltd (E Corbett, prr) Victoria st
 Allen Ell, vigneron, Geelorum
 Amal Collieries of W A Ltd, Vict st
 Anderson Carl G, conrt, Glen Iris
 Anderson, Hartley M, sec Rds Bd and Agric Soc
 Anderson Miss Eliz A, Molloy st
 Anderson, Mrs. L, Victoria st
 Anderson Norman E, Glen I
 Anderson R L, elect conrt, Vict st; p r, Pleton cres
 Andrews Harry B, wtr frm, Zoo st
 Anger A, Constitution rd
 Aram Thos J, Carey st
 Arcadia Tea Rms (E Bartlett), Victoria st
 Armstrong John Ramsay at Armstrong Thos, Wittenoom st
 Athans Constantine, Rathmines
 Atkins Geo, Moore st
 Atkins Les W, Rocky Pt tea rms
 Auguston Frank E, Spencer street
 Austin Hy E, Norwood at AMP Society Stephen at AUSA Co Ltd, Hayward & Son Ltd, agts)
 Abstr Steamships Pty Ltd, Spencer and Co local agts
 Axford, Chas, Stone at Ayling Wtr, const, Wittenoom at
 Baker Edwd W, grcr, Woi-laston st
 Baker, F J, btmk, Vict st
 Baker Miss B, drsmkr, Vict

Baldock & Co Ltd J G, hardware mchts, Vict st
 Baldock Geo J, elect engineer, Vict st; p r, Austral par
 Baldock Jno G (B & Co), Austral par

BANK OF AUSTRALASIA

L W Kell, mgr), Wellington st. See advt front
BANK OF N.S.W. (F H Smithers, mgr), Vict at
 Banting Jas L, Tuart st
 Banting Jno, Sampson st
 Bantling Michl W, rly emp, Spencer st
 Banting Thos J, crprtr, Moore st
 Barber, Robt, Symmonds st
 Barbutts John, cafe, Vict st
 Barker Jas, Cornwell st
 Barnard Fk, Wittenoom st
 Barnett Edwd C, Symmons st
 Barrett Alfd, Spencer st
 Barrett Frank, Spencer st
 Barrie, D G, stn mstr, Princep street
 Barron Mrs B, Wittenoom st
 Bartlett, E, Arcadia Tea Rms, Victoria st
 Bartlett Edw, Beach rd
 Bartlett Edw, crprtr, Beach road
 Bartley, Ellen, Forrest av
 Bath, Eastman & Jenour, soles, Vict st
 Beaglehole Samp, Carey rd S
 Beaglehole Hy, Australind road
 Becker Gustav A, Cross st
 Bedford Hall, Arthur st
 Beer Geo, Stuart st
 Beer Robt, junr, Columbia st
 Beer Robt K, son, Spencer st
 Beer Wm J, Tuart st
 Belgel H M, wine & spirit mcht, Princep st
 Belgel Herman M, Clifton st
 Bennett Wtr G, Spencer st

Benson Arthur R, butcher, Symmons at
 Bergerson Edwd G, Norwood rd S
 Beston, Miss M, mgr Musgroves Ltd, Victoria st
 Bettes, Albt, mgr Bun & Dist Indus Co-op Soc Ltd
 Bickley Alex, Forrest av
 Bickley Arth, Elliot st
 Bieslot, Mrs. H M, Carey st
 Birch Eric Hayes at
 Birchall John, tailor, Stephen st; p r, Zoe st
 Bird Bruce Ocean drive
 Bird J W C, palmstr, Stephen st; p r, Edward st
 Black Dvd F, Teede st
 Blackwood Express (Frank Nunn, editr), Victoria st
 Bloor Geo E, Blackwood rd, South

BLUND

Blund Albt H, Albert rd
 Blyth Geo D, Moore at
 Blythe Albt, Albert at
 Blythe Horace, Rose st
 Blythe Herb, btmk, Albt rd
 Blythe Mrs E L, Spencer at
 Blythe Mrs F, James st
 Roland, Alex, car drvr
 Bolden J J L, Rose at
 Bolden Jno L, motor car ppr, Rose at (s)
 Bon Marche, drapers, Vict at
 Bonser Wm C, Charles st
 Bostock Fredk, Gibson st
 Bostock Wm H, Clark st
 Boulter Alf H, mower & clothier Vict st; pr Haig rd
 Bowden, Eric O, Karri st
 Bowen, P H, relieving p m
 Boyce Chas, Braund st
 Boyce Jno F, recerse sht
 Bradley Arth F, Forrest av
 Bradshaw S H, mgr Millar's Tim & Trading Co Ltd, Carey st
 Bradshaw, Stan, Wittenoom st

Bray Jas, hrdssr & bkslr, Victoria st
 Brode Wtr, Moore st
 Bright Mrs J, nurse, Zoe st
 Brindell Miss J, nurse, Karri at
 Britson, Ensign (Salv Army), Ednie st
 Brittain & Son Wm, undtkrs & mon masons, Wellington st
 Brittain Alf E, Clark st, S
 Brittain Jas, Rose at
 Brittain Jas E, btmk, Clarke st Sth
 Brittain Jas E, junr, grcr, Clarke st Sth
 Brittain Mrs C G, Rathmines
 Brittain Thos, Rathmines
 Brittain Wm, Wlgin st
 Britza Geo F, Latrelle rd
 Brockman Milnd J (Sand-bridge)

BROCKMAN

Brockman Mrs Mary J, Kings rd
 Brodie Sydney, Carey at
 Brown, Alex B, Spencer st
 Brown Albt W, Forrest av
 Brown Michl, Princep st
 Brown Thos, Sampson st
 Browne Miss M, priv hosp, Lovegrove av, Bnby
 Bruce Geo, Stuart st, SB
 Bryant O J, rly emp, Eileen st
 Buck Geo R, Tuart st
 Buck Jas, one drvr, Blackwood rd Sth
 Buck Roy B, Tuart st, S
 Buckle John D, wheelwright, Spencer st Sth
 Buckman Jno W, Tuart at S
 Bunbury Agric Soc, Vict at
 Bunbury Benc Soc (A Mitchell, sec)

Bunbury Ben Bdg Invest & Loan Soc (Perin) (Edith Steere sec) Stephen st

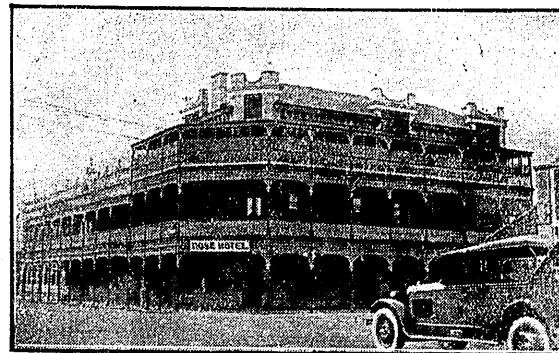
Bunbury Cemetery, Wlgin st
 Bunbury Convent of Mercy, Wittenoom st
 Bunbury Court House (M A Sanders, clk of courts)
 Bunbury Cycle Club (W Milligan, sec)
 Bunby Dioces Reg (W S Hales, sec), Stephen at
 Bunbury & Dist Ambulance Com
 Bunbury & Dist Indus Co-op Soc Ltd (Albt Bettes, mgr)
 Bunbury Evening Continuation School, Arthur st
 Bunbury Free Reading Room & Library (Miss I G Palsley, librarian), Stephen at
 Bunbury Golf Club (E E Ohtenden, sec)
 Bunbury Harbour Board (Wtr Cope, sec) Vict at
 Bunbury "Herald" & Blackwood "Express," Vict at
 "Bunbury Herald" Newsp Co Ltd, proprs "Herald" and Bunbury High Schl (F L H Sherlock, hd mstr, Haig rd)
 Bunbury Hospital (Miss M Watts, mtrn), Stirling at
 Bunbury Hosp Comm (R A Fowler, sec)
 Bunbury Lawn Tennis Club, James at
 Bunbury Lighthouse, Marlston Hill (J T Stineair, actg lighthouse keeper)
 Bunbury Local Bd Health (M Renton Insptr)
 Bunbury Lumpers' Union of Wrkrs (R W Guppy, sec), Vict at
 Bunbury Municipal Chambers (N F Haynes, town clerk) Stephen st

Under Royal  Patronage.

ROSE HOTEL, BUNBURY

Situated within one minute's walk of the Railway Station, close to Sea, and in the very centre of the Town.

FIRST-CLASS CUISINE.



Excellent Sanitary Arrangements — Sample Rooms — Water laid on to every room. — Lock-up Garages — Most up-to-date Hotel in the State.

Families and Gentlemen staying at the Rose Hotel may rely upon finding all the comfort and attention of a first-class hotel at reasonable rates.

Excellent Boating, Surfing Fishing and Shooting close at hand.

L. P. PHILLIPS, Propr.
 Telephone 7

Through Connection to Perth