

This space reserved for

# Commercial Hotel

Busselton

A. O. RIPPON, Proprietor

**BARNARD & SONS G W**

Queen st. Tel 11. Grocers, hardware & provision merchants, drapers, mercers & outfitters; agents for Yates' reliable seeds, The Strath Union & General Insurance Co of A/str, Ltd, "Domo" separators  
 Barnard, Chas (B & Sons)  
 Barnard, Geo W (B & Sons)  
 Barnard, Geo W, junr (B & Sons)  
 Barrett W E, frmr  
 Baxter, J, Caveshouse  
 Bell John, frmr  
 Biggs, E  
 Bignell, J S  
 Bignell, Percy chemist  
 Blake & Reid, frmrs  
 Blenkinsop, L M  
 Blom, Mrs, bdgsh  
 Blythe A, frmr  
 Blythe R G, frmr

Booker, T  
 Bovell, Alex R, com agt  
 Bovell, C A  
 Bowell, Miss A, bdg hse  
 Boyle, R, frmr  
 Boyle, V, frmr  
 Boyle, W, frmr  
 Braidwood, G A  
 Brereton, W C, frmr  
 Brockman, —, nurse, Bus-  
 seltion Hosp  
 Brockman, F L, farmer  
 Brockman, Peter S  
 Brockman, Mrs Edward  
 Brown, C, bmkpr  
 Bunbury, E R, farmer  
 Bunbury, Mrs A M R  
 Burgess, J  
 Burt, S, fisherman  
 Bussell, A J  
 Bussell, F A, farmer  
 Bussell, Miss E, farmer  
 Busselton Buttr Co  
 Busselton Hosp (Nurse  
 Brockman)

**Busselton Library (G A**

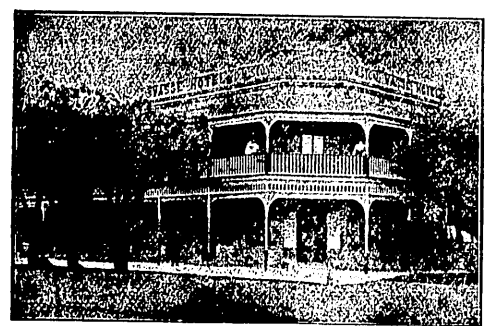
Wright, sec)  
 Butler, S A, lightkpr  
 Camilleri, Fredk W  
 Carter, H, farmer  
 Carter, J  
 Carter, Percy, farmer  
 Carter, S, farmer  
 Chadwick, Mrs  
 Cobley, A, bchr  
 Cockerill J, frmr  
 Coley F J, frmr  
 Collett, E, lineman

**COMMERCIAL HOTEL**

A O Rippon, ppr. Tel, 22  
 Cong Church  
 Connelly, Tim, crtkr, Caves  
 Conran, A W  
 Cookworthy, Mrs F G Sand-  
 linds  
 Coombs, Frnk, sta mstr  
 Cooper E J, frmr  
 Coulls A E, frmr

**Cross, Geo**

Cross, Mrs E F, frtr  
 Cross, Walter  
 Curruthers, F C, sec Workers'  
 Fed  
 Curtis, A J, farmer  
 Curtis, H G, frmr  
 Curtis, W H, farmer  
 Cutthbert, T A, farmer  
 Danloll, F W  
 Davies W E, Ship htl  
 Davis J K, baker  
 Davis, W, frmr  
 Dawson, Edwd, crtkr, Caves  
 Dawson J J, frmr  
 Deason, J H, farmer  
 Dodds, Capt, stavedore  
 Donald, R, frmr  
 Donovan, W  
 Dowell, J, farmer  
 Dowell, R  
 Edwards, Miss, tchr  
 Elliott, J, frtr  
 Elliott, R T, Esplanade htl  
 Evans, Mrs



**The VASSE HOTEL**

Is the most centrally situated and up-to-date House in Town, within four minutes' walk of the Beach, Railway Station, Post Office, Bowling Green, Croquet Lawns, Tennis Courts, Golf Links, etc.

Terms Moderate  
 Goldfields and City Visitors Specially Catered For.  
 The famous Yallingup and Margaret River Cave within easy distance. Coaches and Motor Cars leave the VASSE HOTEL as required.

D. McARTHUR STONE, Proprietor  
**BUSSELTION**

**Falkingham, R, stno msn**

Fenner, E J  
 Finlayson, Robt, farmer  
 Finlayson W J, carrier  
 Fish W, frmr  
 Forrest John  
 Forrest, M A C  
 Forrest, W  
 Fowler, B, asst lghtkpr  
 Fox, David  
 French, George E  
 Gale, Mrs R, farmer  
 Gale, Richd, J.P., grazier  
 Garrett, R G, bnk clk  
 Gibb, Dave, mot car ppr  
 Gibson G D, mgr btrr fac  
 Glew, W, council emp  
 Griffin, Thos  
 Hadley, S, uney  
 Hadley, Wm, labourer  
 Hadlow, J C, farmer  
 Hann H J  
 Hann R G  
 Harding P J  
 Harris, A  
 Harrison, Thos  
 Hartley, H, farmer  
 Harwood, W J, farmer  
 Hawkes E W, frmr  
 Hayes, H  
 Henley H J, baker  
 Herbert-Noyes M E  
 Higgins, C  
 Higgins, Mrs H, frtr  
 Hoigate, John, sen, contr  
 Hoigate, S R, bchr  
 Hoigate, Wm B  
 Holmes, J Wallace, solr  
 House, A, frmr  
 House, C F, farmer  
 Housley, A  
 Hutchins, J, teamster  
 Jarvis, Miss A, dressmaker  
 Jermy, E  
 Johnstone, J, farmer  
 Keenan, Mrs I, farmer  
 Keenan, R  
 Keenan, W S  
 Killeby, B G L, auctnr and  
 store  
 Killeby, Mrs  
 Kinnear, T W  
 Kinsella, E E  
 Knehn, F  
 Knapton, Alfd E, carpnr  
 Knapton A S, carpnr  
 Knapton, L  
 Knapton, Margt  
 Knapton, Mrs  
 Knight, J T  
 Laffer, E F, nurse  
 Larkin, J C  
 Layman  
 Layman, M St C  
 Layman, N G  
 Layman, S F  
 Layman, S G  
 Lightly, Frank  
 Locke, Alton G F, frmr  
 Locke, Justice B, contr  
 Lockhart, Alex, farmer  
 Lockwood W A, frmr  
 Lodge, T S, farmer  
 Longman, W, tchr  
 Lonked, E M  
 Love H, cordl fetry  
 Lowe, G  
 Lumpers' Union (brch), (F  
 C Caruthers, sec)  
 Lund, Geo, junr, per way

**Lyle, L**

McCormick, Rev (R C)  
 McDaniel, Edw, abtucnst  
 McDaniel, Mrs Anne  
 McPadyen, H  
 McPherson, D W, frmr  
 McNess, C  
 Mann, W J, "South West-  
 ern News" & str  
 Matson F  
 Mayor, —  
 Mead F, contr  
 Mead, L F  
 Mead, Mrs, ref rooms  
 Moleri, G  
 Mowett, A  
 Mowett, R, contr  
 Milne, Geo B, town clerk &  
 sec Rds Board  
 Milner, Harry, farmer  
 Millward, Rev S A (Eng)  
 Miner D, hd lghtkpr, Cape  
 Naturaliste  
 Mitchell, B  
 Morgan, A E, engr  
 Morris, Rev G (Cong)  
 Morris, W  
 Mulgravo E J, hrdscr & nws-  
 agnt  
 Norman, F, lineman  
 O'Connell, Mrs, Convalescent  
 Home  
 O'Donnell Bros, grzrs  
 O'Neill, H, shppng agt  
 O'Meara, Hy  
 Ost, Jas L, hltl lnspr  
 Packard, R G, farmer  
 Payne, A J  
 Penke, T W, strekpr  
 Pearce, L  
 Pearce, Edwd, labr  
 Phillips, J H, drpr  
 Pickard H, frmr  
 Pickering, W G, farmer  
 Piffner, Jos  
 Pries, A F  
 Pries, A H  
 Prinsep, H C  
 Prosser, Thos, bootmkr &  
 currier  
 Prouse, Benj, farmer  
 Raitt A, carrier  
 Raitt, Mrs S  
 Rai, P  
 Reid E, const  
 Reading, H F  
 Reading, M C, frmr  
 Reilly, W R, frmr  
 Repatriation Committee (F C  
 Caruthers, sec)  
 Reynolds, P L, sec Vasse  
 Race Club  
 Reynolds, P H, farmer  
 Richards, Thos, farmer  
 Rippon, A O, Commercial htl  
 Robinson Mrs, stre  
 Rose, A N  
 Rose, W C  
 Russell, H H, baker  
 Rutherford, G  
 Sanson, R  
 Sanson, T G, frmr  
 Savage James, frmr  
 Sayers, Carlo, farmer  
 Scannan, Cecil, R, plumber  
 Sears A H, frmr  
 Seymour, F C  
 Seymour, R J, frmr

**Smith, A J**

Smith, David  
 Smith, E A, frmr  
 Smith, E G, frmr  
 Smith F C, frmr  
 Smith, Geo, Busselton htl  
 Smith Geo, frmr  
 Smith H H, frmr  
 Smith, Jno  
 Smith, Robt  
 Southern Dist Agric Soc  
 Sowry A, frmr  
 Starford, osmond  
 State Butter Factory  
 Steele, Chas A, farmer  
 Stone, D McArthur, Vasse  
 Htl  
 Storrs, R C  
 Strachin, W, fisherman  
 Sullivan, Geo, patmstr  
 Sussex Rds Bd (G B Milne,  
 sec)  
 Sutton, Benj, farmer  
 Taylor, H S, mgr W A Bk  
 Taylor, W D, farmer  
 Thomas, H J, carrier  
 Thomas, M E  
 Thompson, C W  
 Thompson, Miss C, coffee pal  
 Thurlie, A E  
 Tonkin, E M  
 Tomkin, Mrs  
 Thorkle W G, frmr  
 Thornlon E, frmr  
 Toront, E  
 Townshend, L J  
 Proy, J  
 Turner, N, frmr  
 Tutton, G H K

**VASSE HOTEL**

(D McArthur Stone, pro-  
 prieter). See advt  
 Vasse Racing Club (P L Rey-  
 nolds, hon sec)  
 Veall, Mrs E  
 Vickery W W, frmr  
 Vincent & McCoomb, frmrs  
 Vine F H, frmr  
 Vines, Fredk B, grzr  
 Walsh, R, hrdscr  
 Walton, G H  
 Waterhouse, J  
 Wauchope, W G  
 Weir Peter, farmer  
 Well Institute (W Glow,  
 crtkr)  
**WESTERN AUSTRALIAN  
 BANK, THE (H S Taylor,  
 mgr).** See advt in Front  
 of Work  
 Whitmore, F C  
 Whittle J, frmr  
 Williams, Thos, gaoler  
 Willmott, H, frmr  
 Woods, E, tchr  
 Wright, G, clerk of courts  
 Wright, W E, farmer  
 Yates, W P, med pract  
 Yelverton, H G, farmer  
 Yoelking, S, engr drrr  
 Young Wm, drpr & grcr  
 Butterfly, sec Koolylna.  
 Byerine Pool, sec Katanning.  
 Byfield's Mill, now known as  
 Woolooloo

**BYFORD, Murray**

dist, 24 m SW by rl. Tel  
 Abernethy, Jno, gdnr  
 Alexander, Hdt, gdnr  
 Atkinson, Harold B, frt grwr  
 Bateman, Saml B, farmer  
 Bourman, J E, frmr  
 Bradshaw, W, mtr Brk Wks  
 Briggs, Robt H, farmer  
 Briggs, Thos, dairy frmr  
 Broadhurst H R, orchard &  
 frmr  
 Brockwell, J, brickmaker  
 Brown, W, acct  
 Bullock H, brckmkr  
 Burnside, W, carpnr  
 Cardup Brick Works  
 Collins, Wm, burnor  
 Coulthard Bros, mgrs Cardup  
 Brick Works  
 Cothead, J, grdnr, Cardup  
 Evans, R, frmr  
 Gordon, Arthur J, farmer  
 Hammill, J, tchr  
 Harding, W, blksmith  
 Lovell, E, ednr  
 Martin, Alfd, brckmkr  
 Martin, Mrs E R, bdgsh  
 Masters, Harold J, frmr  
 Mathieson, A J, frmr  
 Mead, Mrs Henry, farmer  
 Mead, W H, farmer  
 Moore, W, farmer  
 Nairn Wm, frmr, Cardup  
 Nairn Wm F, frmr  
 Orton, A E, dairy farmer  
 Proy, J  
 Turner, N, frmr  
 Pashert, J H, stnmstr  
 Phillip, W, gaur  
 Phillips W, brckmkr  
 Roberts, Timothy, dairymn  
 Schuetzer, Harry, farmer  
 Shillebeer, W, strekpr  
 Sladden, Arth, contr  
 State Brick Wks (W Brad-  
 shaw, mgr)  
 Willis, W J, frt grwr

**BYRO, 645 m N L rail**

to Yalogo, then coach 216  
 m fortnightly. See also  
 Murgoo and Yaloo, mail  
 bag from Yalogo  
 Campbell, Wm, tmstr  
 Cashin, T, stckmn  
 Chaffo, Geo, stckmn  
 Hartel Bros Ltd, Byro sta  
 Keogh, Jos M, mgr sta  
 Nairn, W, stckmn  
 Oliver, W E, bkpr  
 Scott, M, stckmn  
 Shaughnessy, J, contr  
 Spiers, R, stckmn  
 Cesar Anna Plains, sec Wal-  
 lal  
 Calcamin, sec Northam  
**CALINGIRI, 104 m E**  
 by rl fr Perth  
 Adams, Thos, farmer  
 Anderson, Mrs E  
 Anderson Wm, farmer  
 Bowes, Thos, frmr

CIRCULATING THROUGHOUT THE WHOLE OF THE SOUTH-  
 WEST OF WESTERN AUSTRALIA

Printed and Published at Busselton Every Friday

# South-Western News

The Best Advertising Medium. Read by Everybody.

*The Leading Dairy and Mixed Farming District of W.A.*  
 State Butter Factory. Timber Mills.  
 Famous Caves District. Tourist Resorts.

**W. J. MANN, Proprietor**